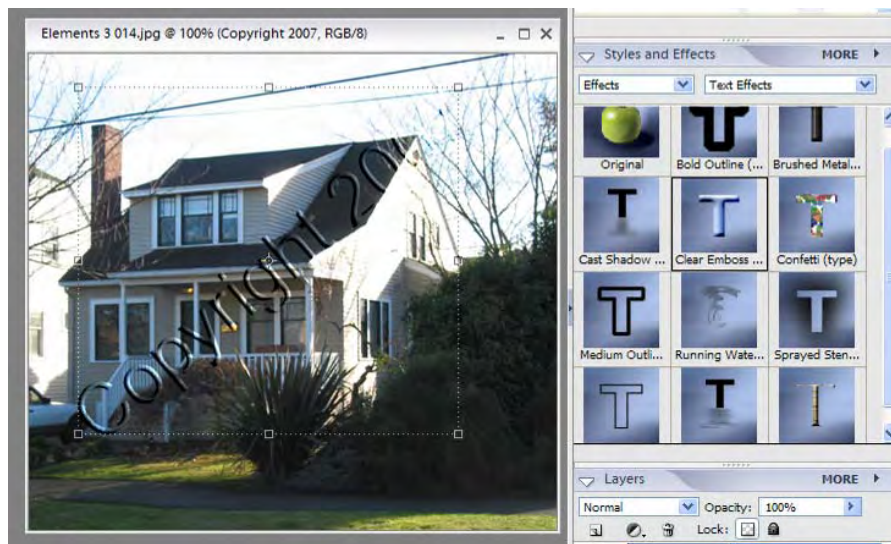


Ongoing Photoshop Workshops – taught by Alan Weaver

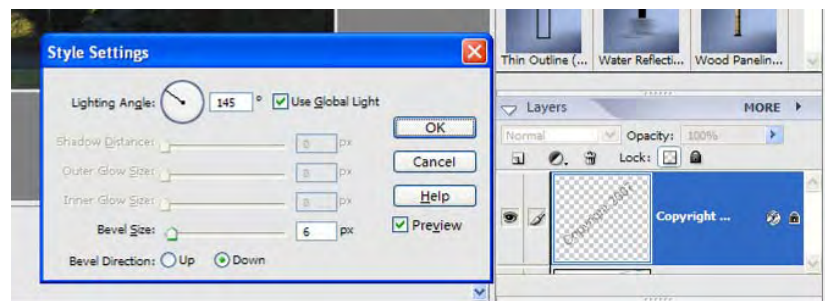
Embossing text over an image (i.e. copyright, or photographer's name)

1. Create a text box with the information in it. Use black text.
2. Size and position the text box
3. Go to styles and effects in the palette bin
4. Choose Effects and Style Effects (see below image)
5. Make sure the text layer and the move tool is selected (the diagonal arrow)
6. Double click on the clear emboss feature on the toolbar
7. Save as a JPG so that the layers are flattened.
8. Useful tip: if you are doing this to many photos, create a separate file with the information in it and drag this layer into other photographs.



Additional tips:

In the text layer, you will see a little icon to the left of the key. (this means the layer is partially locked). Double click on it to work with style settings to further finesse your work. Bevel size, direction, lighting angle can be adjusted. (note, not all layer styles can be adjusted)

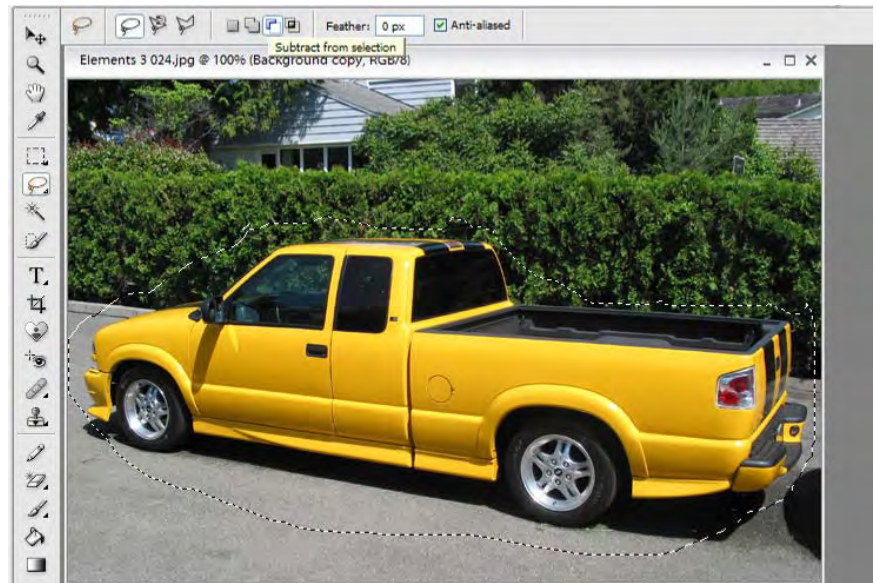
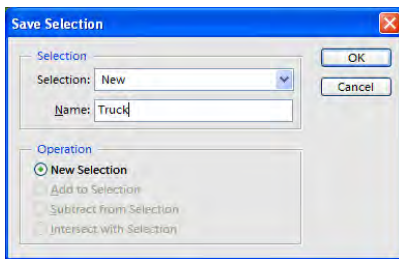


Changing the color of an object

The color replacement tool doesn't work well on all types of images. It works best when the color of the object you want to change is not found in other areas of the image. There are two different methods which will be discussed.

This works with a yellow truck.

1. Duplicate this layer.
2. Use the lasso tool to draw a rough shape around the image.
3. In the tool options bar, select Subtract From Selection and then drag a shape around some of the background scenery to remove it from the selection.
4. Choose Select > Save Selection and name it truck.

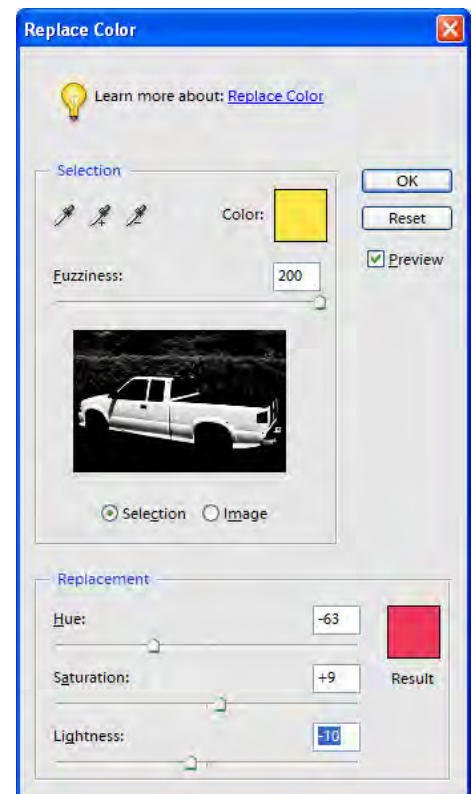


5. Deselect (CTRL + D or Select > Deselect)
6. Choose Enhance > Adjust Color > Replace Color.
7. Make sure you click on the eye dropper
8. Click in the yellow of the truck
9. Make selections as indicated in diagram below right. Drag the hue, saturation, and lightness to change the color. For example, Hue = -60, Saturation = 8, Lightness = -9 for a bright red
10. Work with the fuzziness control to adjust the color of the truck. You will see the image previewed.
11. Click in add to sample (the middle eye dropper) and it will remove the mustardy tinge.
12. You might see a slight change to the shrubbery color in the background when this is done.

Replacing color in a limited area of the image

If you have a red truck, click on the undo to restore it back.

1. Choose Select > Load Selection. Choose Truck as the selection.
2. Choose Enhance > Adjust Color > Replace Color
3. Follow steps 7-11 above. You will notice less change to the background colors.

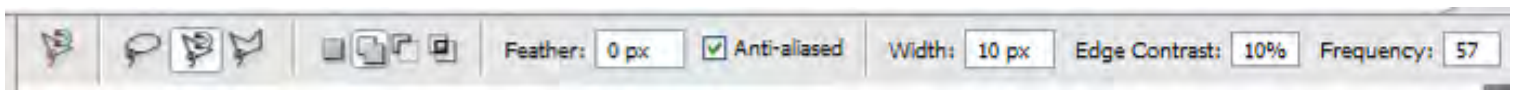
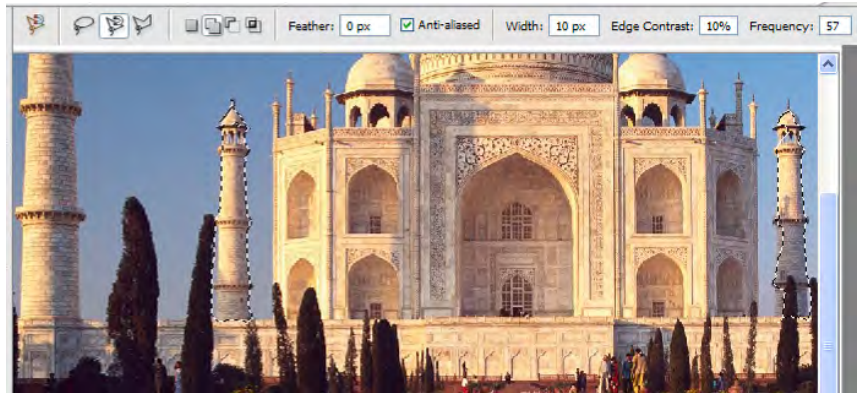


Multiple Selections Adding/Subtracting to Selections

You all know that the magnetic lasso tool can help you select an object. Often, we may miss a section or need to add to the selection.

The example shown here has dotted lines around two towers at the Taj Mahal.

By reviewing the ribbon at the top, these are the features that we have:



The icon at the far left shows that the magnetic lasso tool has been selected. The next three icons to the right show the lasso, magnetic lasso, and polygonal lasso tool. (hold the mouse over any icon to get a tool tip.)

The next group of four objects shows additional features that work with this tool:

- New Selection
- Add to Selection
- Subtract from Selection
- Intersect with Selection

The add to and subtract from are very useful to work with

It is recommended that you keep the defaults for the other sections of this toolbar. To restore the default options, click inside the very first icon and choose Reset Tool.